

WinFrog Device Group:	Sounder
Device Name/Model:	Raytheon PDD
Device Manufacturer:	Raytheon Marine Company 22 Cotton Road, Nashua, New Hampshire, USA 03063-4219 USA Tel: 603 881 5200 Fax: 603 864 4756 www.raymarine.com
Device Data String(s) Output to WinFrog:	Depth, Status
WinFrog Data String(s) Output to Device:	Nil
WinFrog .raw Data Record Type(s):	Depth: Type 411: depth, status & dtime are repeated 15 times

DEVICE DESCRIPTION:

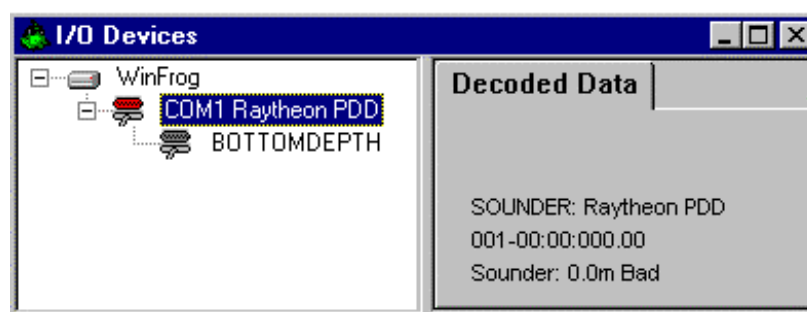
The Raytheon PDD echo sounder is a dated product that is no longer produced by Raytheon. Due to the discontinuation of this device, the information found in this document is limited to internal documentation only. This device was initially used with Pelagos' Phrognav software in the 1980's, which indicates the age of this device. Note that the PDD outputs data in BCD format that must be converted to ASCII format before WinFrog can use it.

DEVICE CONFIGURATION INSTRUCTIONS:

Baud Rate: 9600
Data Bits: 8
Stop Bits: 1
Parity: None

WINFROG I/O DEVICES > CONFIG OPTIONS:

The Raytheon PDD is added to WinFrog from the SOUNDER device category. No configuration is available or required at the generic I/O Device window level.



WINFROG VEHICLE - DEVICE > EDIT OPTIONS:

Adding the Raytheon PDD sounder to WinFrog creates a BOTTOMDEPTH data item that must be added to the appropriate vehicle's device list. Once the BOTTOMDEPTH data item has been added to a vehicle's device list, it must be edited to suit the application.

In the vehicle's device list, highlight the SOUNDER, Raytheon PDD, BOTTOMDEPTH data item and click the Edit button. The standard **Configure Sounder** dialog box appears. See documentation on the NMEA DEPTH Sounder for details on configuring this dialog box.

CONFIGURATION DETAILS:

The Raytheon PDD outputs data in BCD format, requiring the data to be converted to ASCII prior to acceptance in WinFrog. A BCD to ASCII converter is therefore required. There is no handshaking with the interface.

The Binary output is as follows:

PIN	FUNCTION
1-4	Tenths
5-8	Units
9-12	Tens
13-16	Hundreds
17-20	Thousands
25	Ground

SPECIFICATIONS:

Due to the age of this device, we are unable to supply any technical specifications.